

**CULINAIRE™ 39" STAINLESS STEEL
KITCHEN SINK**

7510.103 Top Mount

- 18 Gauge Stainless Steel
- 18/10 Chrome Nickel content
- Dual level bowl with drainboard design
- Top mount
- Single faucet hole
- One accessory hole
- Mounting clips supplied

Nominal Dimensions:

990 x 559 x 229 x 129mm
(39" x 22" x 9" x 5")

Bowl sizes:

Right Hand: 150mm (6") wide
343mm (13-1/2") front to back
121mm (4-3/4") deep

Left Hand: 540mm (21") wide
476mm (18-3/4") front to back
219mm (8-5/8") deep

Compliance Certifications -

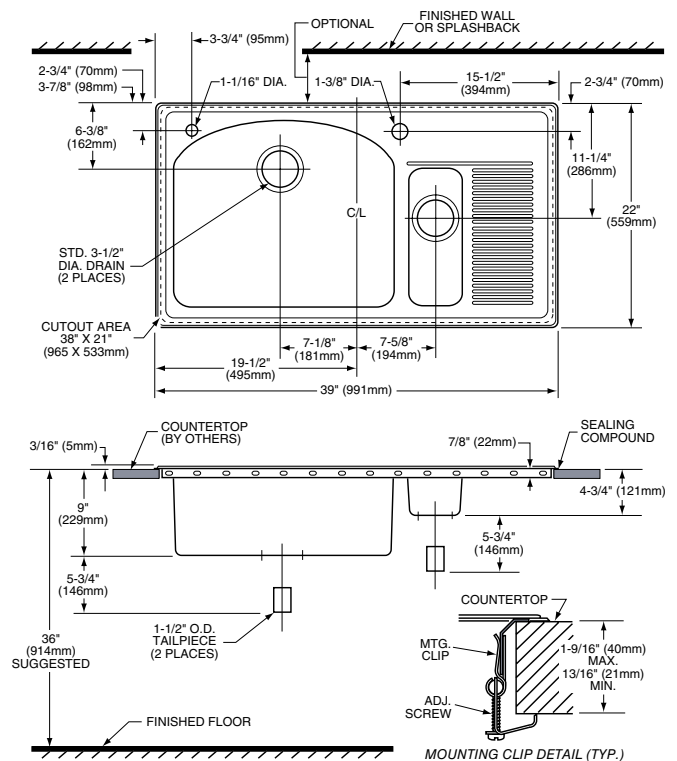
Meets or Exceeds the Following Specifications:

- ASME A112.19.3 for Stainless Steel Plumbing Fixtures
- CSA B45 for Plumbing Fixtures

NOTES:

FITTINGS NOT INCLUDED AND MUST BE ORDERED SEPARATELY. PROVIDE SUITABLE REINFORCEMENT FOR ALL WALL AND COUNTERTOP SUPPORTS.

IMPORTANT: Dimensions of fixtures are nominal and may vary within the range of tolerances established by ANSI Standard Z124.6. These measurements are subject to change or cancellation. No responsibility is assumed for use of superseded or voided leaflet.



To Be Specified:

- Color: Stainless Steel
- Faucet*:
- Faucet Finish:
- Basket Strainer: 4331.013
- Soap Dispenser: 4503.115
- Vinyl Coated Sink Rack-Lg: 7414.100

- Vinyl Coated Dish Rack-Large: 7354.100
- Vinyl Coated Dish Rack-Sm: 7532.100
- Wood Cutting Board-Rectangular: 9001.100
- Stainless Steel Colander: 8130.100
- Hole Cover Plug: 790773-0070A
- Top Mount Clip Kit for 1" plus-thick countertop: 790772-0070A

* See faucet section for available models