



MODEL NUMBER:

- ☐ **3275 Bath/Shower Fitting**
Slip-on diverter tub spout. Easy Clean showerhead. Lever handles. Polished Chrome finish.

GENERAL DESCRIPTION:

Cast brass valve body on 8 inch centers. 1/4 turn washerless ceramic disc valve cartridges - reversible for use with either lever or knob handles. 1/2" N.P.T. female threaded inlets and outlets. Easy clean showerhead with 2.0 gpm/7.6L/min. flow restrictor.

PRODUCT FEATURES:

Brass Construction: Durable - Ideal for prolonged contact with water. Provides the finest surface for application of all finishes.

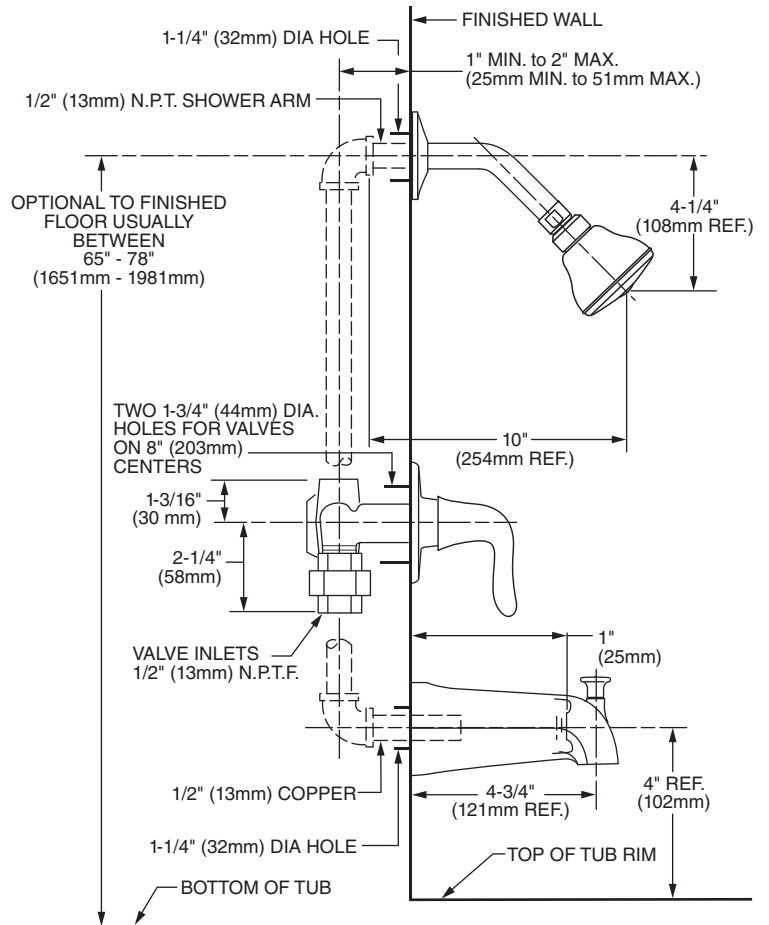
Ceramic Disc Valve Cartridges: Assures a lifetime of smooth handle operation and drip-free performance.

Integral Unions: No soldering required.

Exclusive Handle Alignment System: Allows fine tuning of handle position.

Exclusive Plaster Guard: Plaster guard can be used to test for leaks prior to handle installation.

Lifetime Warranty: On function and finish.



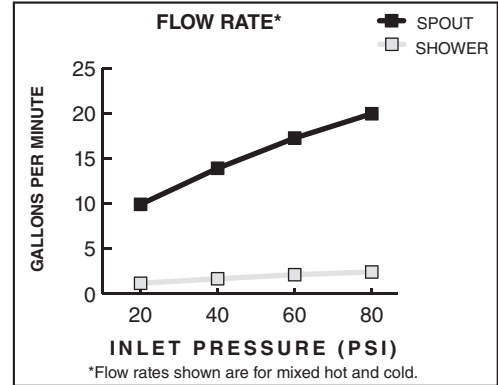
SUGGESTED SPECIFICATION:

Two handle bath/shower fitting shall feature cast brass construction. Shall also feature 1/4 turn washerless ceramic disc valve cartridges that are reversible for use with lever or knob handles. Fitting shall be American Standard Mode # 3275.


CODES AND STANDARDS

These products meet or exceed the following codes and standards:

ASME A112.18.1
CSA B 125



Product Number	Description
3275	Two handle Bath/Shower. Slip-on diverter tub spout. Easy Clean Showerhead. Lever handles. Polished Chrome finish.

 Meets the American Disabilities Act Guidelines and **ANSI A117.1** Requirements for the physically challenged.