

**PRODUCT FEATURES:**

**Optimal Performance with ICS Scrub Sink:** Faucet is design matched with the American Standard ICS to minimize pooling & splashing of water.

**Rigid tubular brass gooseneck spout**

**Laminar Flow in Spout Base** prevents the mix of air & water.

**Plain Spout End:** Nothing is located on the end of the spout to collect lime or debris.

**Flexible Selectronic Platform** with programmable, multi-function sensor.

**Hygienic, touch-free operation**

**Easy & Flexible Installation:** Single post mounting with optional 4" & 8" deck plate. Water resistant solenoid enclosure mounts to wall.

**Durable Vandal-Resistant Brass Body:** Ideal for high-use commercial applications.

**Self-Cleaning Solenoid Valve:** Wiper spring prevents clogging

**Easy to Service Integrated Strainer:** Patented integrated strainer protects solenoid from debris. Strainer is enclosed in removable debris cup for easy service.

**Optional Auto Purge Feature:** Faucet can be programmed to open at a pre-determined time after the last use to purge the faucet and water lines of stagnant water.

**Safety Timer:** Helps prevent vandalism by turning off the faucet if the sensor is covered for 55 seconds or more. Timing is adjustable with optional remote control.

**Adjustable Range:** Detection zone can be adjusted manually or with optional remote control.

**Fail-Safe:** Faucet automatically shuts off upon loss of power or dead battery. Prevents costly excess water usage and potential flooding.

**Low Lead:** Faucet contains ≤ 0.25% total lead content by weighted average.

**GENERAL DESCRIPTION:**

Electronic faucet with proximity operation. Vandal-resistant brass construction with single post mounting. Water pressure range from 20 to 125 psi. Single inlet. Rigid gooseneck spout. 18" flexible inlet hose with 3/8" compression fitting for connection to control box. 1.5 gpm laminar flow restrictor in spout base. Plain spout end.

**MODEL NUMBER:**



■ **PWRX™ LONG-LIFE BATTERY POWERED**

**6053.193** 1.5 gpm/5.7 L/min pressure compensating laminar flow device in the spout base. Plain spout end.

■ **DC (CR-P2 LITHIUM BATTERY) POWERED**

**6055.193** 1.5 gpm/5.7 L/min pressure compensating laminar flow device in the spout base. Plain spout end.

■ **OPTIONAL 4" or 8" Deck plates**

**605P.400** 4" brass deck plate with 1/4" fixation studs and quick spin nuts. (6-1/8" x 2-1/8" x 1/2")  
 **605P.800** 8" brass deck plate with 1/4" fixation studs and quick spin nuts. (10-1/8" x 2-3/8" x 1/2")

■ **OPTIONAL Mixing Valve**

**605XTMV1070** Thermostatic mixing valve. 20" flexible stainless steel inlet hoses with 3/8" compression fittings. ASSE 1070 certified down to 0.35 gpm/1.3 L/min.

■ **OPTIONAL 4" or 8" Deck plates**

**605P.400** 4" brass deck plate with 1/4" fixation studs and quick spin nuts. (6-1/8" x 2-1/8" x 1/2")  
 **605P.800** 8" brass deck plate with 1/4" fixation studs and quick spin nuts. (10-1/8" x 2-3/8" x 1/2")

■ **OPTIONAL Mixing Valve**

**605XTMV1070** Thermostatic mixing valve. 20" flexible inlet hoses with 3/8" compression fittings. ASSE 1070 certified down to 0.35 gpm/1.3 L/min.

■ **OPTIONAL Remote Control**

**605XRT** Adjusts setup parameters and allows for customization of functions. Can be used to program all Selectronic faucets and flush valves.

**Power Options:**

• **PWRX Long-Life Battery System:** Battery Life - 480,000 cycles (10 years @ 4,000 cycles per month). Advanced battery & electronics reduce the downtime and maintenance costs associated with changing batteries. Safety Circuitry prevents overheating in case of short circuit and protects the electronics from damage.

• **DC (Battery):** Includes CR-P2 lithium battery. Battery Life - 192,000 cycles (4 years @ 4,000 cycles per month).

**RECOMMENDED SPECIFICATION:**

Electronic, sensor-operated lavatory faucet shall feature a programmable, multi-function sensor and an electronically operated self-cleaning solenoid valve. Shall also feature a vandal resistant all brass body with single inlet and in-line strainer. Rigid gooseneck spout with laminar flow control device in the base of the spout and plain spout end. Shall meet ANSI A112.18.1 and ANSI 117.1 codes. Fitting shall be American Standard Model # 605\_.193.

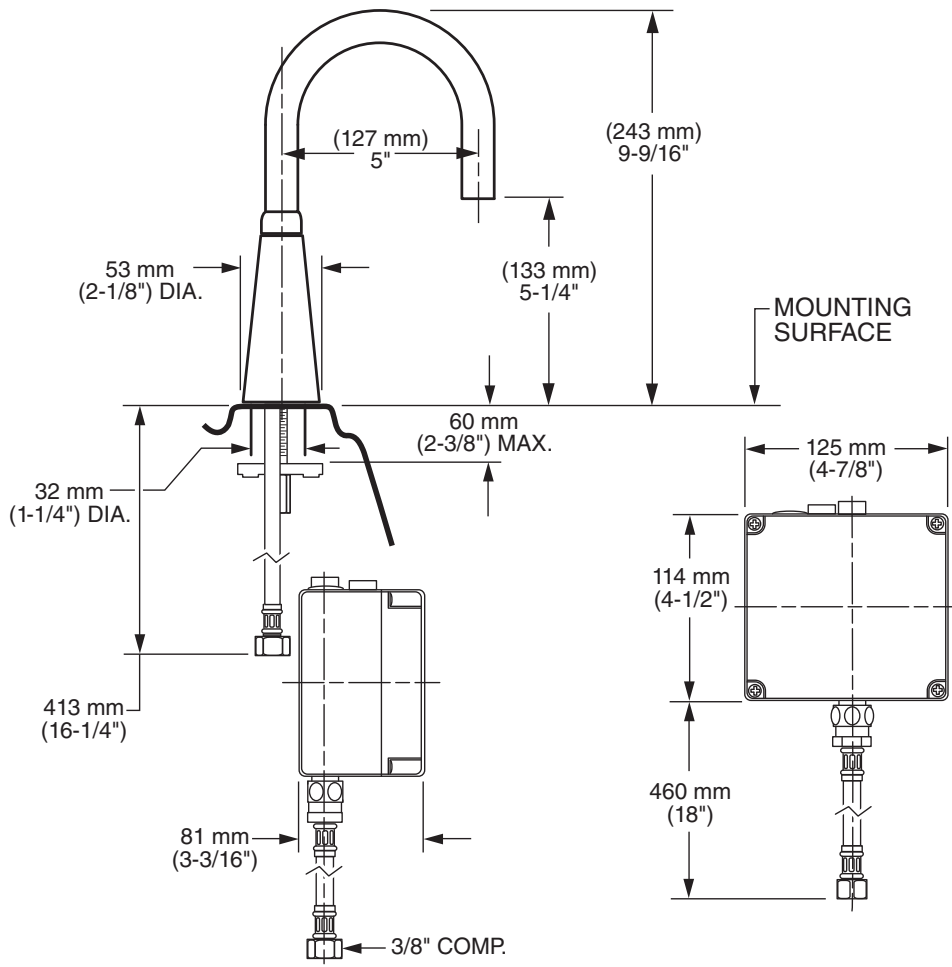
**CODES AND STANDARDS**

These products meet or exceed the following codes and standards:

- ANSI A117.1**
- ASME A112.18.1**
- CSA B125.1**
- NSF 372**

Other Aerators Available:	
Part Suffix	Description
LV10	1.0 gpm/3.8 L/min PCA Vandal-Resistant Non-Aerated Laminar Flow Outlet
L22	2.2 gpm/8.3 L/min PCA Vandal-Resistant Non-Aerated Laminar Flow Outlet

\*PCA - PRESSURE COMPENSATING



**ADA** Meets the American Disabilities Act Guidelines and **ANSI A117.1** Requirements for accessible and usable building facilities - check local codes

**PART OF LIXIL**