

American Standard

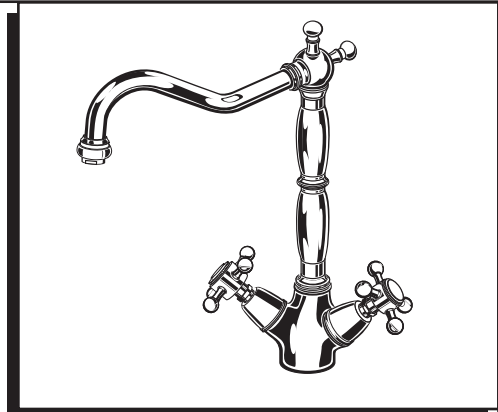
Installation  
Instructions  
4233.400

Culinaire™

**BAR/PANTRY FAUCET**

Thank you for selecting American-Standard...  
the benchmark of fine quality for over 100 years.

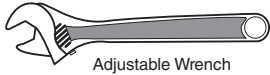
To ensure that your installation proceeds smoothly—  
please read these instructions carefully before you begin.



Certified to comply with ANSI A112.18.1M

M968258 REV. 1.3

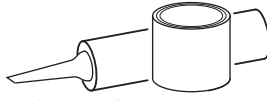
**Recommended Tools & Materials**



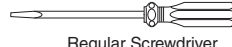
Adjustable Wrench



Tubing Cutter



Plumbers' Putty or  
Caulking



Regular Screwdriver



Phillips Screwdriver

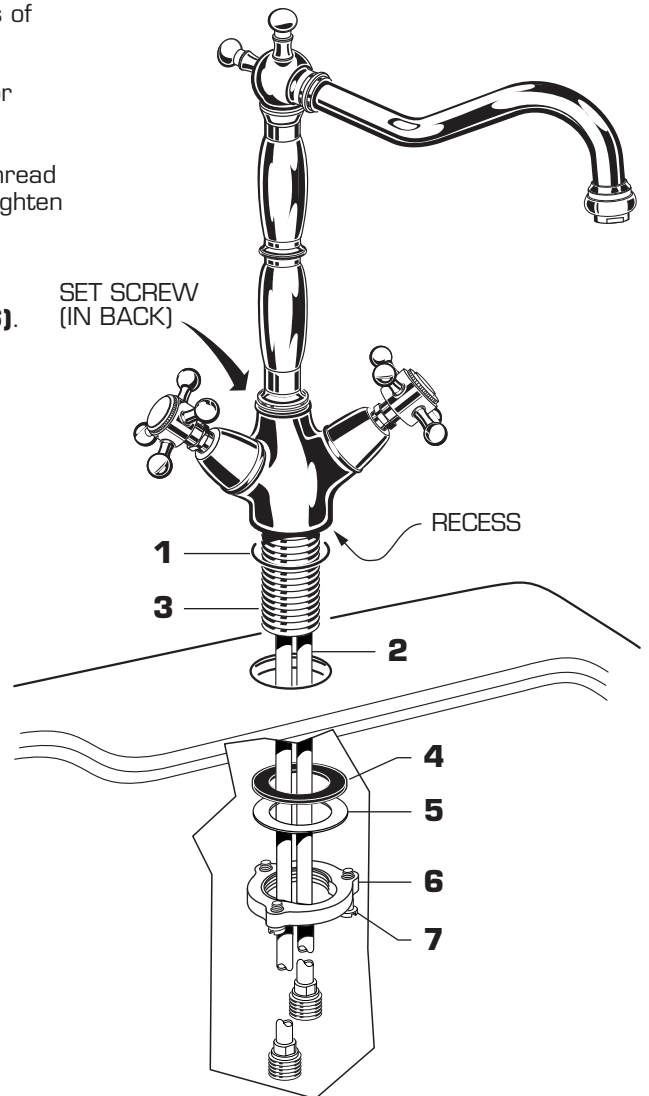


Channel Locks

**1 INSTALL FAUCET**

**CAUTION** Turn off hot and cold water  
supplies before beginning.

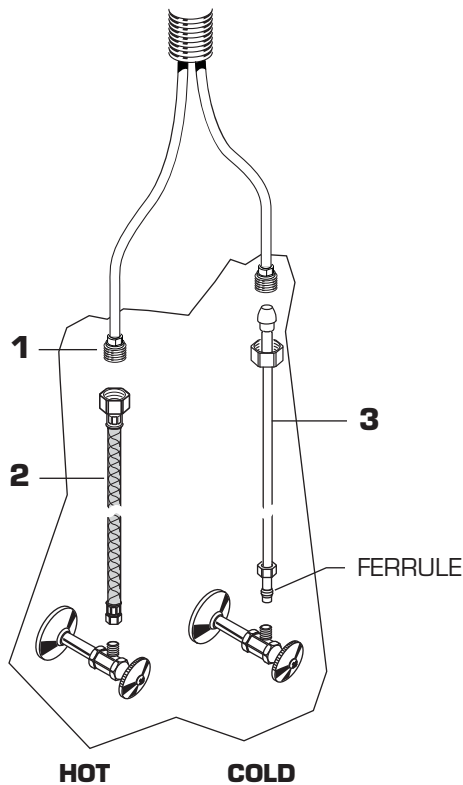
- Make certain the large O-RING (1) is properly seated in recess of faucet body.
- Insert supply TUBES (2) and SHANK (3) through hole of sink or mounting surface
- Assemble RUBBER WASHER (4), BRASS WASHER (5), and thread LOCKNUT (6) onto SHANK (3) from underside of sink. Hand tighten LOCKNUT (6) Check that FAUCET is centered.  
**NOTE: Set screw is in back of faucet body.**
- Use a screwdriver to tighten the SCREWS (7) on LOCKNUT (6). Alternate tightening the SCREWS (7) slightly each time until snug to ensure even pressure.



## 2 MAKE WATER SUPPLY CONNECTIONS

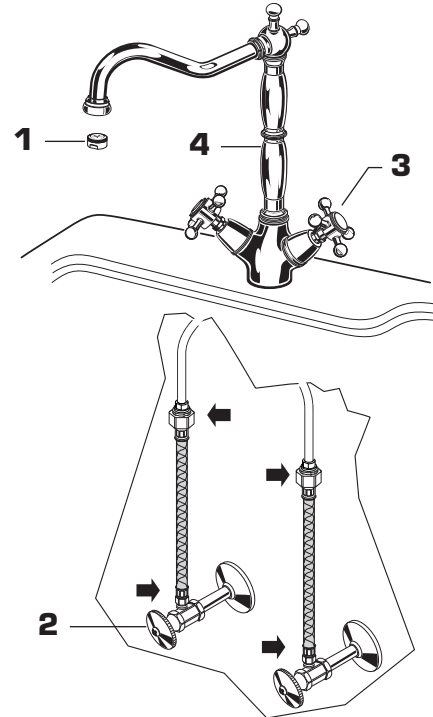
**NOTE: FLEXIBLE SUPPLIES OR BULL-NOSE RISERS MUST BE PURCHASED SEPARATELY.**

- Connect water supplies to SUPPLY ADAPTERS (1) with 1/2" IPS FLEXIBLE SUPPLIES (2) or 3/8" O.D. BULL-NOSE RISERS (3).
- Use tubing cutter to cut to proper length.
- Connect the HOT to the left supply and the COLD to the right supply.
- Use adjustable wrench on coupling nut and another wrench on supply adapters to prevent twisting of supply tubes. Tighten connections. Do not over tighten. Be careful not to kink copper supply when bending.



## 3 TEST INSTALLED FAUCET

- Remove AERATOR (1). With handles in OFF position, turn on WATER SUPPLIES (2) and check all connections for leaks. ➔
- Operate both HANDLES (3) to flush water lines thoroughly. Rotate SPOUT (4) in both directions. Replace AERATOR (1).



## 4 SERVICE

- To change direction of handle rotation, proceed as follows:
  - Turn valve to OFF position.
  - Remove INDEX CAP (1). Remove HANDLE SCREW (2).
  - Pull off HANDLE (3) and pull off HANDLE BASE (4).
  - Remove SPRING CLIP (6).
  - Lift STOP WASHER (5), turn 90° and replace.
  - Replace SPRING CLIP (6).
  - Reinstall HANDLE BASE (4) and HANDLE ASSEMBLY (3,2,1).

### If faucet drips proceed as follows:

- Aerator may accumulate dirt causing distorted and reduced water flow. Remove aerator and rinse clean.
- If spout drips, operate handles several times from ON to OFF position. Do not force-handles turn only 90°.

