

CHAMPION® 4 ROUND FRONT COMPLETE TOILET

2585.000

- Vitreous china
- EverClean® surface inhibits the growth of stain and odor causing bacteria, mold and mildew on the surface
- Low-consumption (6.0 Lpf/1.6 gpf)
- Features **Champion® 4 Flushing System** performance platform
- 4" non-adjustable, piston action Accelerator™ flush valve
- Siphon action jetted bowl
- 2-3/8" fully-glazed trapway
- Speed Connect® tank/bowl coupling system
- Chrome-plated trip lever
- Sweeping pier on bowl
- 100% factory flush tested
- 2 bolt caps
- Color-matched plastic toilet seat and cover with EverClean® surface
- Wax ring gasket with closet bolts
- 10 year warranty



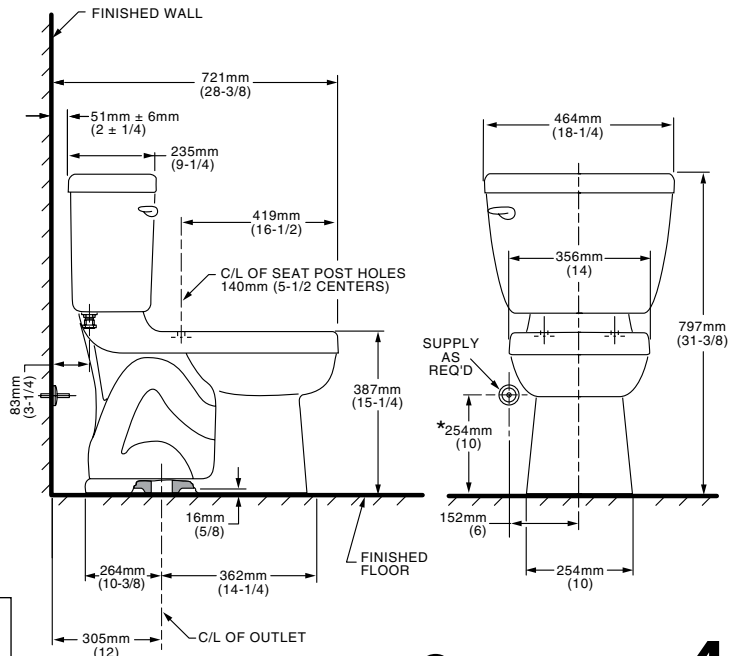
Nominal Dimensions:

721 x 464 x 797mm
 (28-3/8" x 18-1/4" x 31-3/8")

Compliance Certifications -

Meets or Exceeds the Following Specifications:

- ASME A112.19.2M for Vitreous China Fixtures - includes Flush Performance, Ball Pass Diameter, Trap Seal Depth and all Dimensions
- Los Angeles Department of Water and Power Supplementary Purchase Specification for Non-Adjustability - July, 2003 revision



To Be Specified:

- Color: White
- Supply with stop:

CHAMPION® 4
 Flushing System

NOTES:

THIS TOILET IS DESIGNED TO ROUGH-IN AT A MINIMUM DIMENSION OF 305MM (12") FROM FINISHED WALL TO C/L OF OUTLET. SUPPLY NOT INCLUDED WITH FIXTURE AND MUST BE ORDERED SEPARATELY.
 * DIMENSION SHOWN FOR LOCATION OF SUPPLY IS SUGGESTED.

IMPORTANT: Dimensions of fixtures are nominal and may vary within the range of tolerances established by ANSI Standard A112.19.2. These measurements are subject to change or cancellation. No responsibility is assumed for use of superseded or voided pages.